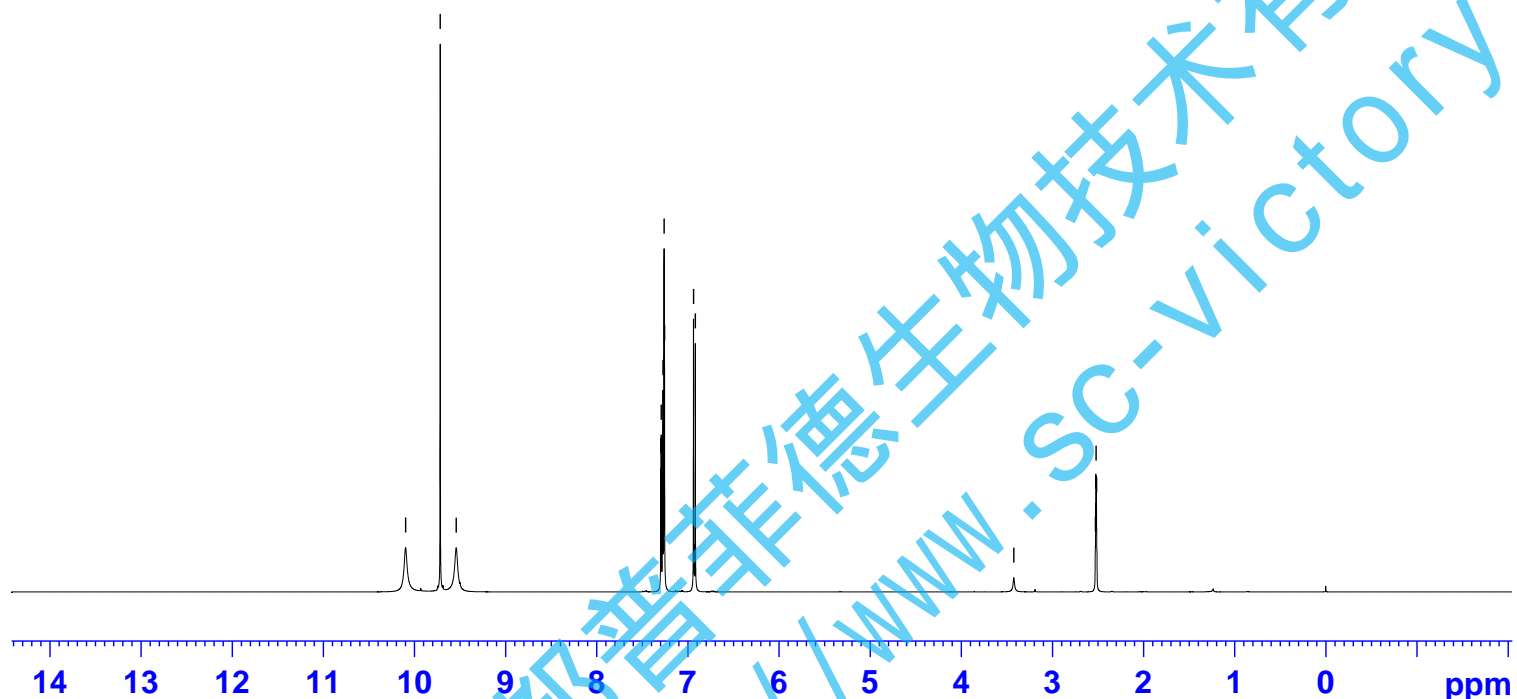




10.096
9.716
9.540

7.296
7.291
7.276
7.271
7.260
7.255
6.937
6.927
6.917

3.422
2.528
2.523
2.519
2.515



Current Data Parameters
 NAME GLP70
 EXPNO 10
 PROCNO 1

F2 - Acquisition Parameters

INSTRUM spect
 PROBHD Z116098_0564 (
 PULPROG zg30
 TD 65536
 SOLVENT DMSO
 NS 16
 DS 2
 SWH 8012.820 Hz
 FIDRES 0.244532 Hz
 AQ 4.0894465 sec
 RG 62.81
 DW 62.400 usec
 DE 6.50 usec
 TE 300.0 K
 D1 1.00000000 sec
 TD0 1
 SFO1 400.1324708 MHz
 NUC1 1H
 P1 10.35 usec
 PLW1 14.56099987 W

F2 - Processing parameters
 SI 65536
 SF 400.129949 MHz
 WDW EM
 SSB 0
 LB 0.30 Hz
 GB 0
 PC 1.00

0.946
1.053
0.954

1.989
1.000

成都普菲德生物技术有限公司
 http://www.sc-victory.com

GLP70

— 191.52

— 152.59

— 146.35

— 129.34

— 124.95

— 116.00

— 114.85

40.58

40.37

40.16

39.95

39.74

39.53

39.32



Current Data Parameters

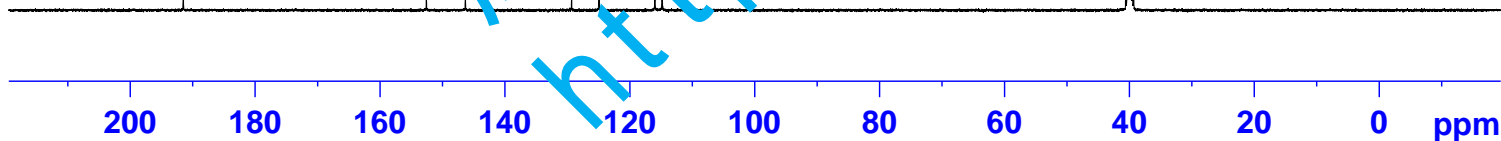
NAM GLP70
EXPRO 11
ROCN 1

F2 - A i i i n P r m r

INSTRUM spect
PROBHD z116098_0564 (
PULPROG zgpg30
TD 65536
SOLVENT DMSO
NS 600
DS 4
SWH 24038.461 Hz
FIDRES 0.733596 Hz
AQ 1.3631488 sec
RG 198.68
DW 20.800 usec
DE 6.50 usec
TE 300.0 K
D1 2.00000000 sec
D11 0.03000000 sec
TD0 1
SFO1 100.6228298 MHz
NUC1 13C
P1 10.53 usec
PLW1 69.16899872 W
SFO2 400.1316005 MHz
NUC2 1H
CPDPRG[2 waltz16
PCPD2 90.00 usec
PLW2 14.56099987 W
PLW12 0.19257000 W
PLW13 0.09686100 W

F2 - Processing parameters

SI 32768
SF 100.6127685 MHz
WDW EM
SSB 0
LB 1.00 Hz
GB 0
PC 1.40



成都普菲德生物技术有限公司
http://www.sc-victory.com